

# AEG

## LIGHTING CONTACTORS



### Approvals

IEC/EN 60947-1  
IEC/EN 60947-5-1  
VDE 0660  
UL 508  
CSA 22.2 NO.14

### Technical Data

#### LS7K

30A Ballast (600V)  
20A Tungsten (277V)

#### LS11K

30A Ballast (480V)  
30A Tungsten (277V)

#### LS22K

90A Ballast (480V)  
60A Tungsten (277V)



### 4Pole / 30A Ballast - 20A Tungsten

Part Number	Power Pole Contacts	
	Open	Closed
LS7K-400-*	4	0
LS7K-04-*	0	4
LS7K-R00-*	2	2

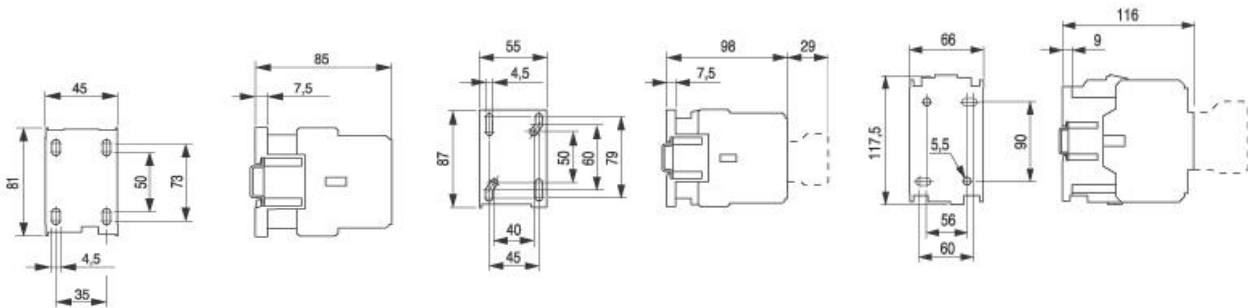
### 4Pole / 30A Ballast - 30A Tungsten

LS11K-400-*	4	0
LS11K-R00-*	2	2

### 3Pole / 90A Ballast - 60A Tungsten

LS22K-3L-*	3	0
------------	---	---

\* Ordering Code Example: **LS7K-400-A**



* - Coil Selection			Coil Data		
AC	DC	Suffix	-	AC	DC
24V	-	G	Inrush Burdon	45VA	5.5W
120V	-	A	Holding Burdon	6VA	5.5W
208/230V	-	C	Pick Up Voltage (+/-)	10+ / -15 %	10+ / -20 %
347V	-	347V	Drop Out Voltage (-)	(-) 45-60%	(-)60-80%
480V	-	E	Maximum Operations Per Hour		
600V	-	F	No Load	9000	3600
-	12V	MSW	Rated Load (AC-1, AC-3)	1200	1200
-	24V	NSW	Full Motor Load (AC-4)	360	360
-	48V	OSW			
-	110V	PSW			