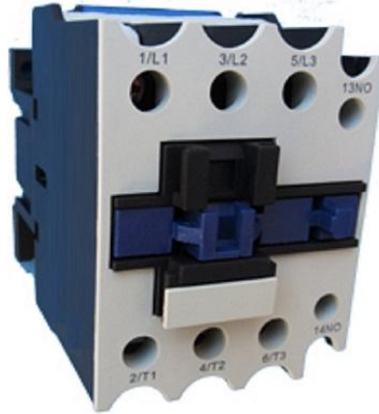




3-Pole Contactors (20hp @ 575V)  
ECX32



Contactor Selection and Data

		HP @ 575V			
		20hp			
AC Contactors	Full Voltage Non-Reversing	ECX32-*	-	-	
	Reversing	RECX32-*	-	-	
Auxiliary Contacts	Maximum Aux Contacts	5 (1 Built In)	-	-	
	Maximum Contact Blocks	1	-	-	
Auxiliary Contacts Amperage (A600, P600)		10A	-	-	
AC-1 (Resistive) Amperage		50A	-	-	
Full Load Amperage @ 240V (AC-3)		42A	-	-	
Horsepower Ratings	Single Phase	115V	3	-	-
		230V	5	-	-
	Three Phase	200V	10	-	-
		230V	15	-	-
		460V	20	-	-
		575V	20	-	-

* - Coil Selection			Coil Data		
AC	DC	Suffix	-	AC	-
24V	-	G	Inrush Burdon	110VA	-
120V	-	A	Holding Burdon	11VA	-
208/230V	-	C	Pick Up Voltage ( +/- )	10+ / -15 %	-
480V	-	E	Drop Out Voltage ( - )	(-) 20-75%	-
600V	-	F	Maximum Operations		
			Mechanical Operations	6,000,000	-
			Electrical Operations	600,000	-
Dimensions		Height (Inch)	Width (Inch)	Depth (Inch)	
		3.4"	2.24"	3.94"	