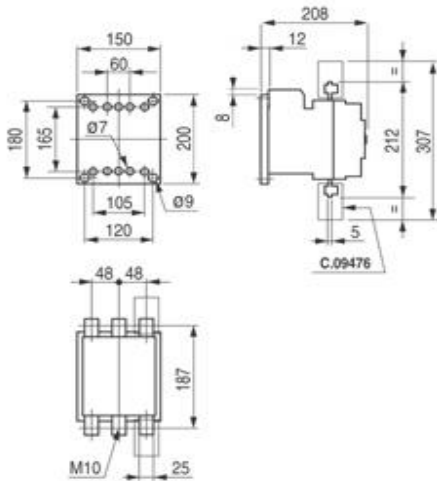




3-Pole Contactors (150 - 300hp @ 575V)
LS132K, LS160K



Contactor Selection and Data



		HP @ 575V (kW @ 380/415V, 50Hz)			
		150HP(132kW)	300HP(160kW)		
AC Contactors	Full Voltage Non-Reversing	LS132K-322-*	LS160K-322-*	-	
	Reversing	RLS132K-*	RLS160K-*	-	
Auxiliary Contacts	Maximum Aux Contacts	8	8	-	
	Maximum Contact Blocks	4	4	-	
Auxiliary Contacts Amperage (A600, P600)		10A	10A	-	
Continuous Amperage Rating (UL/CSA)		200A	310A	-	
AC-1 (Resistive) Amperage		315A	500A	-	
Full Load Amperage (AC-3)		192A	302A	-	
Horsepower Ratings	Single Phase	115V	-	-	
		230V	-	-	
	Three Phase	200V	60	100	-
		230V	75	100	-
		460V	150	250	-
		575V	150	300	-
* - Coil Selection		Coil Data			
AC	DC	Suffix	-	AC	
24V		GN	Inrush Burden	425VA	
120V		AP	Holding Burden	20VA	
230V		CR	Pick Up Voltage (+/-)	+10 / -20 %	
480V		EX	Drop Out Voltage (-)	(-) 45-60%	
Maximum Operations Per Hour					
No Load			1200		
Rated Load (AC-1, AC-3)			600		
Full Motor Load (AC-4)			150		
Dimensions	Height (Inch)	Width (Inch)	Depth (Inch)		
	7.08"	6.76"	8.12"		