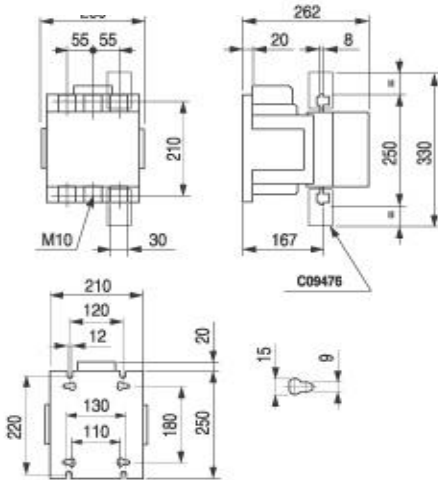




3-Pole Contactors (600hp @ 575V)
LS375K



Contactor Selection and Data



		HP @ 575V (kW @ 380/415V, 50Hz)			
		600HP(375kW)			
AC Contactors	Full Voltage Non-Reversing	LS375K-322-*	-	-	
	Reversing	RLS375K-*	-	-	
Auxiliary Contacts	Maximum Aux Contacts	8	-	-	
	Maximum Contact Blocks	4	-	-	
Auxiliary Contacts Amperage (A600, P600)		10A	-	-	
Continuous Amperage Rating (UL/CSA)		650A	-	-	
AC-1 (Resistive) Amperage		1000A	-	-	
Full Load Amperage (AC-3)		602A	-	-	
Horsepower Ratings	Single Phase	115V	-	-	
		230V	-	-	
	Three Phase	200V	200	-	-
		230V	250	-	-
		460V	500	-	-
		575V	600	-	-
* - Coil Selection		Coil Data			
AC	DC	Suffix	-	AC	
24V		GN	Inrush Burden	750VA	
120V		AP	Holding Burden	25VA	
230V		CR	Pick Up Voltage (+/-)	+10 / -20 %	
480V		EX	Drop Out Voltage (-)	(-) 45-60%	
Maximum Operations Per Hour					
No Load			900		
Rated Load (AC-1, AC-3)			300		
Full Motor Load (AC-4)			120		
Dimensions	Height (Inch)	Width (Inch)	Depth (Inch)		
	8.66"	9.06"	10.31"		