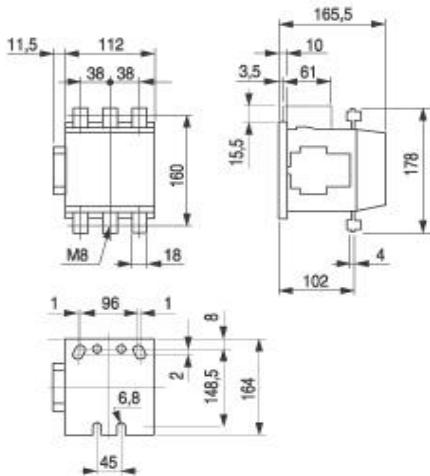




3-Pole Contactors (125 - 150hp @ 575V)  
**LS75K, LS90K**



Contactor Selection and Data



		HP @ 575V (kW @ 380/415V, 50Hz)			
		125HP (75kW)	150HP (90kW)		
AC Contactors	Full Voltage Non-Reversing	<b>LS75K-322-*</b>	<b>LS90K-322-*</b>	-	
	Reversing	<b>RLS75K-*</b>	<b>RLS90K-*</b>	-	
Auxiliary Contacts	Maximum Aux Contacts	8	8	-	
	Maximum Contact Blocks	4	4	-	
Auxiliary Contacts Amperage (A600, P600)		10A	10A	-	
Continuous Amperage Rating (UL/CSA)		150A	175A	-	
AC-1 (Resistive) Amperage		200A	250A	-	
Full Load Amperage (AC-3)		140A	156A	-	
Horsepower Ratings	Single Phase	115V	10	15	-
		230V	25	30	-
	Three Phase	200V	40	50	-
		230V	50	60	-
		460V	100	125	-
		575V	125	150	-
<b>* - Coil Selection</b>		<b>Coil Data</b>			
<b>AC</b>	<b>DC</b>	<b>Suffix</b>	<b>-</b>	<b>AC</b>	
24V	-	G	Inrush Burden	350VA	
120V	-	A	Holding Burden	20VA	
208/230V	-	C	Pick Up Voltage ( +/- )	+10 / -20 %	
347V	-	347V	Drop Out Voltage ( - )	(-) 45-60%	
480V	-	E	Maximum Operations Per Hour		
600V	-	F	No Load	1200	
-	12V	MSW	Rated Load (AC-1, AC-3)	600	
-	24V	NSW	Full Motor Load (AC-4)	150	
-	48V	OSW	Dimensions	Height (Inch)	
-	110V	PSW		Width (Inch)	Depth (Inch)
			6.3"	4.38"	6.5"